

Université Grenoble Alpes

TUM ERASMUS



University



- ▶ 3rd largest university in France
- ▶ ~ 60.000 students (~10.000 internationals)
- ▶ Several master programs
- ▶ Well connected to research (ILL, ESRF, IRAM, Institut Néel,...)
- ▶ French language courses
- ▶ Variety of sports classes





- ▶ Semesters:
 - September – January/February
 - February – Mai/June
- ▶ Vacation week(s) for All Saints' Day, Christmas, Winter, Easter
- ▶ Language skills: English/French B1 recommended
- ▶ More school-like classes
- ▶ Exams during and/or at the end of the semester
- ▶ Grades: from 0 to 20 (10 is passed), 20 very rare



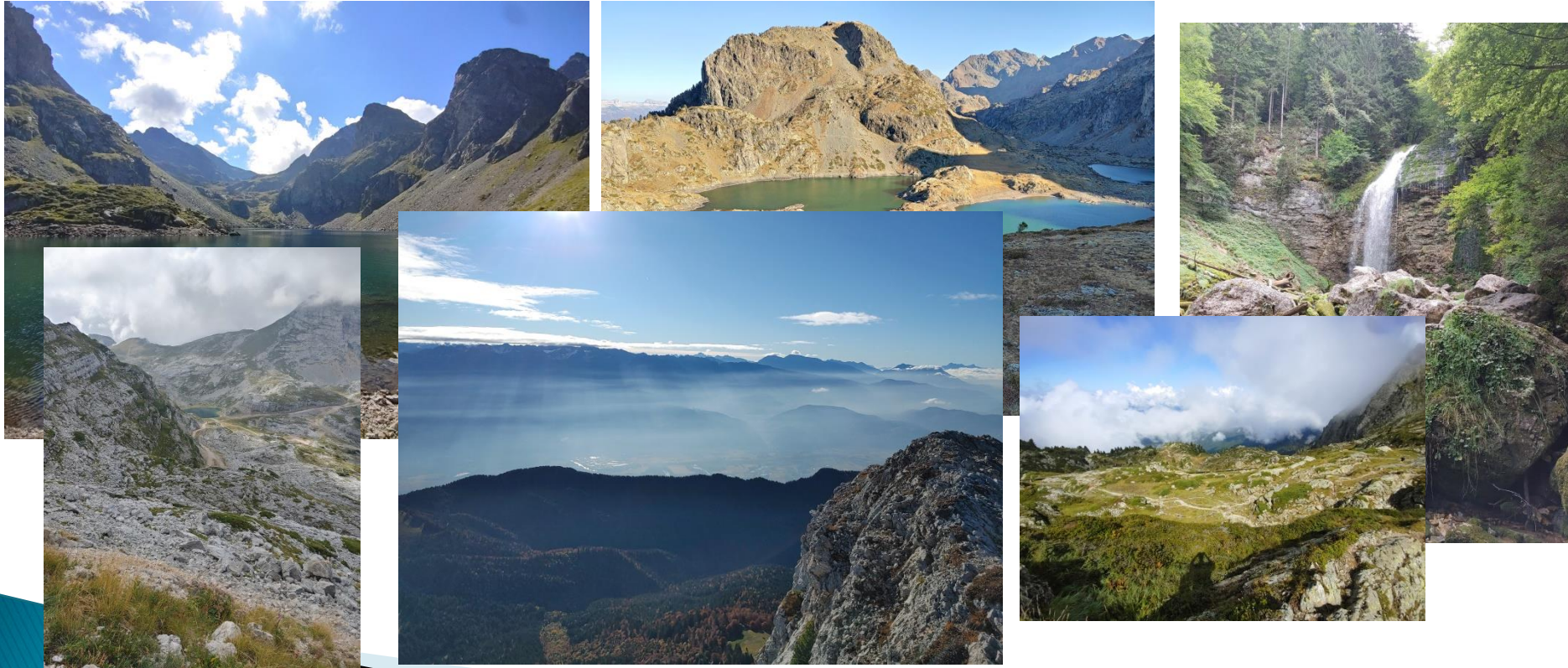
Housing/Living in Grenoble

- ▶ Residence halls and shared flats by CROUS: basic but comparatively cheap (from 290€)
- ▶ Also private apartments, more expensive
- ▶ ISSO helps with the application
- ▶ Price level comparable to Munich
- ▶ Public transport/bike rental: 15€/month

Grenoble



Chartreuse / Belledonne / Vercors



Lyon / Geneva / Marseille



Covid-19 restrictions

- ▶ Lectures/exams in presence
- ▶ Wearing a mask obligatory in university
- ▶ “Pass sanitaire” required in bars, museums, events,...

Questions?

peter.wild@tum.de

Thank you for your attention!