

HELSINGIN YLIOPISTO
HELSINGFORS UNIVERSITET
UNIVERSITY OF HELSINKI

Helsingin Yliopisto

My exchange semester at the University of Helsinki



First: The technical details



- Which language certificates do I need?



- When and how can I choose my courses?



- How can I find an accomodation?



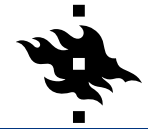
- English B2 is enough (Abitur)



- All Finns usually speak very good English



- Finnish language is easy to pronounce, grammar is very hard.
- Master courses are usually all in English, but only few Bachelor courses.



- The semesters are shifted 2020/2021:

- August 31st – December 20th
- January 17th – May 16th



- Course application one week before semester start



- Searching and choosing courses: webodi.helsinki.fi



- One click application for student housing

- HOAS: more shared flats & Unihome: more studio apartments
- Munich prices



- Usually, one has to be lucky to get a place there, but due to corona, it is very easy for exchange students to get it.



- Open housing market is slightly more expensive than in Munich.



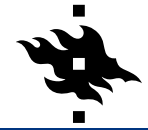
- Living



- Sights



- Public transportation



- Most groceries more expensive than in Germany (especially alcohol!)



- Classic supermarkets are Prisma, K-market, S-market and Lidl (often German special weeks, for Spätzle, Lebkuchen, etc.)



- Saving hints:
 - Fresh fish from the supermarket
 - Filtered coffee
 - Alcohol from Talinn (15€ for the ferry)
 - Uni café is cheap and generous

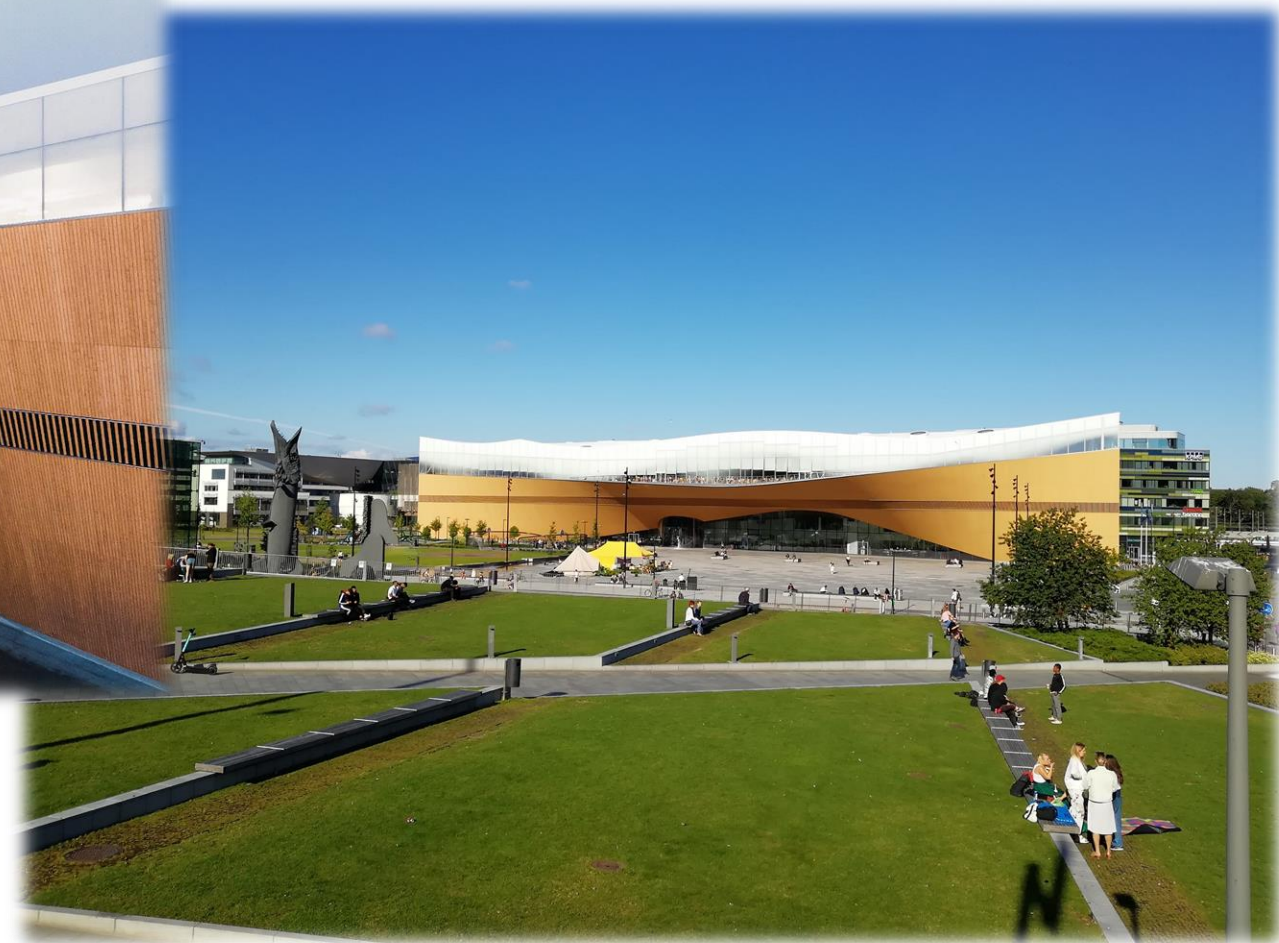
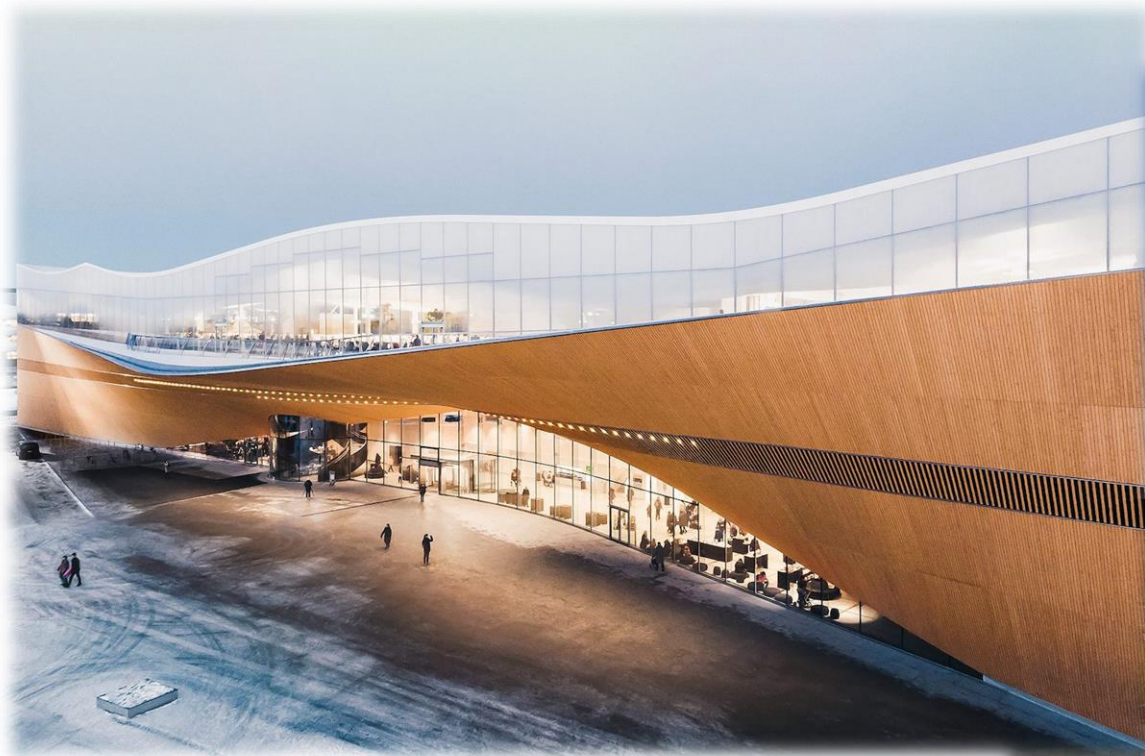


There is a lot of nature in and around Helsinki, so check out your area!





Don't miss the Oodi library.





The sea is everywhere!

Make sure to check out the harbour(s) and Sompasauna





And the standard sight: Helsinki cathedral



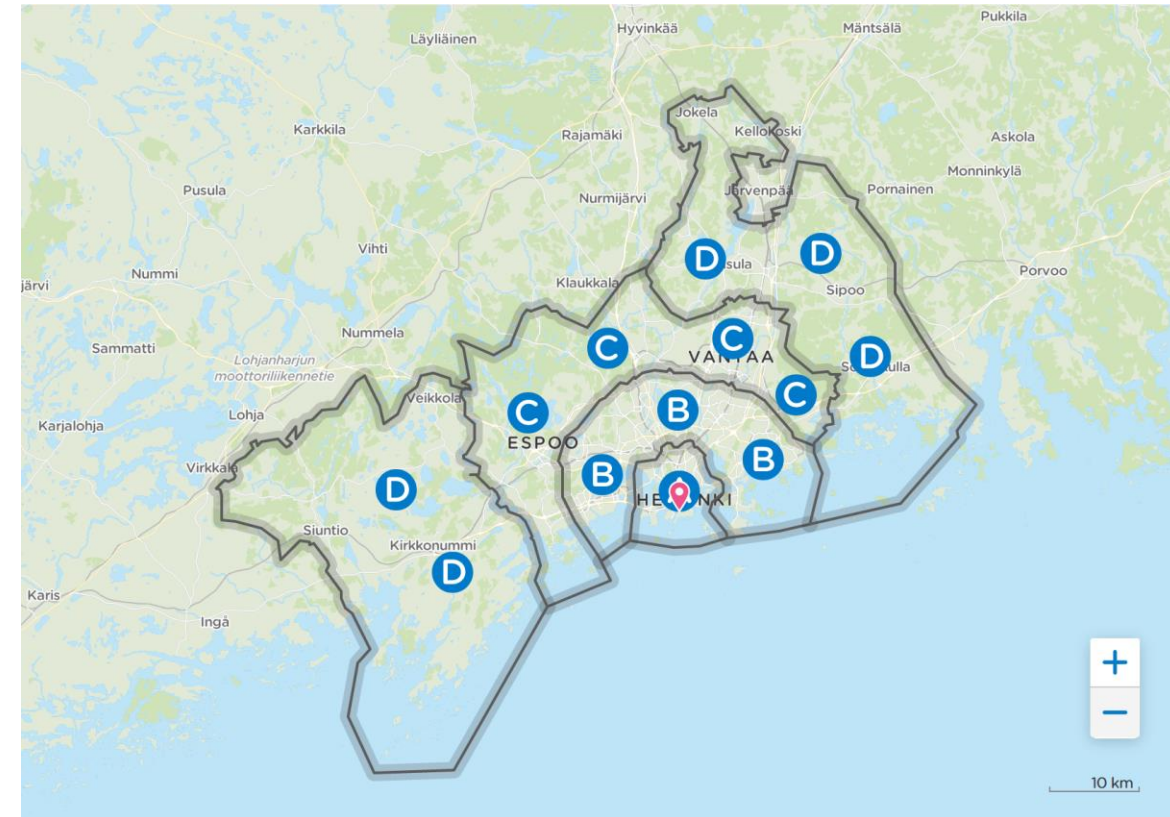


How do I get around in Helsinki and Finland in general?



Metropole area divided into 4 zones:

- HSL app combines payment and route planning for the whole system.
- The student card is very cheap (~120€ per semester for AB-zone)
- Nuuksio and Sipoo nationalparks are within the HSL-system





Finnish transportation system is very reliable and cheap for Finnish students.

- Trains: check out vr.fi (all major cities)
- Busses: check out matkahuolto.fi (fixed routes anywhere)





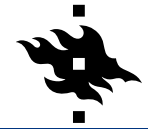
- Courses, specialties and schedule



- Exams



- Grading system



- 1 Semester = 2 teaching periods
(courses often go for one period)



- Level comparable to TUM
- Masters courses usually in English



- Corona during semester: Mostly remote teaching via zoom
exception:
 - Libraries
 - field trips (forrestry, meteorology, etc.)
 - lab courses
 - Uni café
 - Uni sport





- There's an exam week after each teaching period.



- Exams are currently mostly held remotely.



- Include homework as a big part

- Similar tasks like homework



- Grading system:

- Grades from 0-5
- 0 is fail, 1 is just passed, ...



- 5 is quite reachable, if you do your homework.



Student Life in Helsinki

To-Dos in Finland

And now: The fun part

Student Life in Helsinki

To-Dos in Finland

Student groups:

- Overalls show field of study and are usually covered in batches
- Lots of events, even with corona
 - BBQ
 - Picknicks
 - Scavenger-Hunts
- Cancelled due to corona:
 - ferry cruises to Riga and Stockholm (tax free alcohol...)
 - Sitsit: festive dinner party



Student Life in Helsinki

To-Dos in Finland

- South: Turku – Archipelago – Porvoo
- North: Lapland!
- In general:
 - Sauna
 - Ice-Swimming
 - Hiking
 - Camping (see: *Everymans-Right*)

Student Life in Helsinki

**Visit
Porvoo**



To-Dos in Finland



Student Life in Helsinki

To-Dos in Finland

**Visit Turku,
The former capital city**



Student Life in Helsinki



To-Dos in Finland



**Don't miss Lapland!
In summer...**

Student Life in Helsinki

To-Dos in Finland

...and in winter.



Exchange in Helsinki - Finland



Summary: Corona restrictions

- Summer until December:
 - Everything open, even Clubs, if they had a hygiene concept
 - Some of the biggest events did not take place (City festival, Sitsit)
 - Open travel to Norway and Estland
- In Helsinki from December until January (preliminary):
 - University buildings closed
 - Museums and sports sites are closed
 - Travel within Finland still unrestricted